

INSTALLATION INSTRUCTIONS

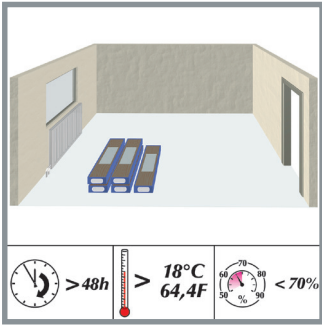


This installation profile is for:

Product group	Product	Plank Format	Thickness	Installation profile
FLOORganic XPT	Wide Plank	1383 x 244 mm	8.5	Angle Tap
FLOORganic XPT	Standard Plank	1288 x 191 mm	12.5	Angle Tap
FLOORganic XPT	Standard Plank	1286 x 192 mm	8.5	Angle Tap
FLOORganic XPT	Standard Plank	1288 x 191 mm	8.5	Angle Tap
FLOORganic XPT	Standard Plank	1383 x 193 mm	8.5	Angle Tap



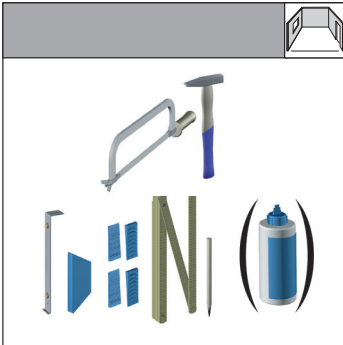
Installation profile
Angle / Tap



Storage:

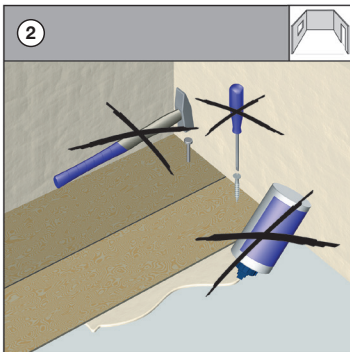
The panels must be stored flat in the room in their unopened packaging. Allow the unopened packages to acclimatise for at least 48 hours at a room temperature of at least 18°C and a relative humidity of $\leq 70\%$

Kaindl laminate flooring must always be stored in draught-free, dry rooms. During transport, packages must be taken care of to ensure that the packaging units are not exposed to the weather elements.



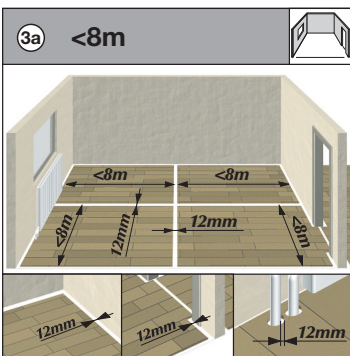
Needed installation tools:

- Saw
- Hammer: at least 500 gr.
- Pull Bar
- Measuring device
- Spacer
- Folding rule
- Pencil



It is prohibited to affix any part of the Laminate Flooring to the subfloor or any other object

The flooring should be laid without the use of any adhesives or other means of attachment - the tongue and groove are designed to lock together mechanically. Under no circumstances should the panels be glued, nailed, or otherwise affixed to the subfloor. NO heavy objects should be placed on top of the floor as that would prohibit the floor from floating and expanding/contracting naturally, as it is designed to.



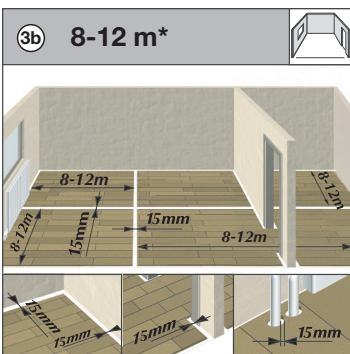
Maximum span without expansion gap

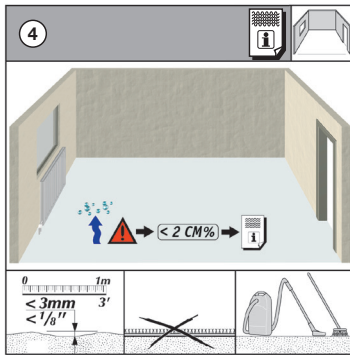
For a continuous installation area of $<8\text{ m}$ in the direction of the panel width and $<8\text{ m}$ in the direction of the panel length, expansion joints of at least 12 mm must be provided. For larger continuous installation areas of $8\text{--}12\text{ m}^*$ in the direction of the panel width and $8\text{--}12\text{ m}^*$ in the direction of the panel length, expansion joints of 15 mm must be provided.

Laminate flooring consists predominantly of wood. Wood is a hygroscopic material and always adapts to the ambient humidity, which results in dimensional changes.

The expansion can be up to 2 mm/m.

This fact must be taken into account during installation. A minimum wall clearance of 12 or 15 mm all round must be maintained. A clearance of 12 or 15 mm must also be maintained from fixed structural elements, e.g. radiator pipes.





Subfloor requirements

Dry, level, firm and clean subfloor.

Evenness

The subfloor has to be even to a maximum of 3 mm/m (1/8" on 3'). Small differences in floor level can be adjusted with an underlay. Unevenness of more than a maximum of 3 mm/m (1/8" on 3') in floor level must either be sanded down or filled in with filling/leveling compound.

Existing Subfloors

Old fixed carpets, Needle felt carpets are unhygienic and too soft to install laminate flooring over and must be removed. An installation on PVC and linoleum- coating can only be done-, if the floor is glued down, has no loose areas and if there is no underfloor heating.

Cleanness

The subfloor has to be absolutely clean before installing the laminate and free of any debris.

Installation on concrete/mineral compound subfloor

As the drying time depends on climatic conditions, the drying times given should be regarded as guidelines. To be on the safe side, two weeks should always be added. Absolute certainty can only be achieved by taking a proper measurement. The most widely accepted method is the CM method (calcium carbide method).

- CM-concrete c.f.1 week/cm 2.0%
- anhydrate c.f. 2 weeks/cm 0,3%
- poured asphalt from 18 supo/supC
- magnesia c.f. humidity balance
- mineral filler prod. instructions
- installation on a mineral substrate

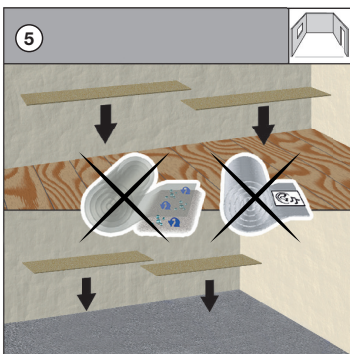
Installation on wood subfloors

Wooden constructions must be sufficiently ventilated (4cm²/sup_ ventilation area per each m²/sup_ of flooring). Principally subfloors consisting of wood (chipboard, hardboard and floorboard etc.) must not be covered with airtight materials as beneath the covering microorganisms can find ideal conditions to exist, thereby ruining the floor.

Since sufficient ventilation must be allowed, in sections of the installation near the wall, the wooden strip must be adjusted to allow for ventilation to pass through floor construction, including after the floor has been installed. It must be presumed that the existing hollow/space underneath the construction will be constantly dry, to guarantee the balance of moisture of the wooden construction independent of the seasons. Therefore PE film as vapor absorption will not be needed.

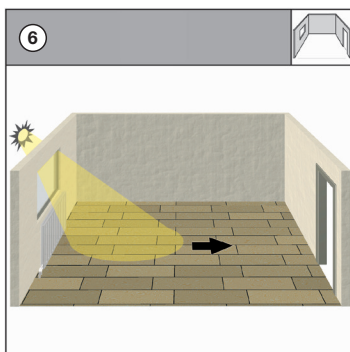
[Download Info sheet 6 Underfloor heating](#)

[Download Info sheet 7 CM-Measuring](#)



Subfloor

As the laminate flooring already has an integrated underlay, no additional vapour barrier or impact sound insulation is required.



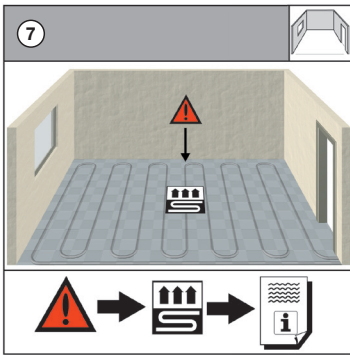
Laying Direction

Recommended installation direction is lengthwise to the main light source.

Flooring consists of several individual boards. The single planks are more visible in bright light.

The joints are more visible crosswise than lengthwise to the light source.

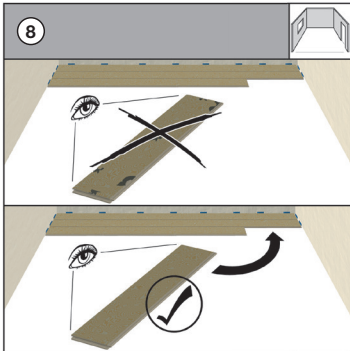
Because of the panel format there are less joints in the length than in the width. This is only recommended because there are also other circumstances that may influence the laying direction of the flooring.



Installation in conjunction with underfloor heating

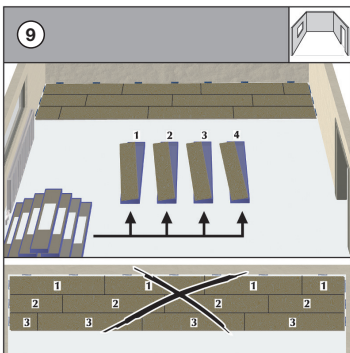
Kaindl laminate flooring can be installed trouble-free in conjunction with hot water underfloor heating systems. In case the Kaindl laminate flooring should be installed in conjunction with electric underfloor heating, please see the information sheet on underfloor heating.

[Download Info sheet 6 Underfloor heating](#)



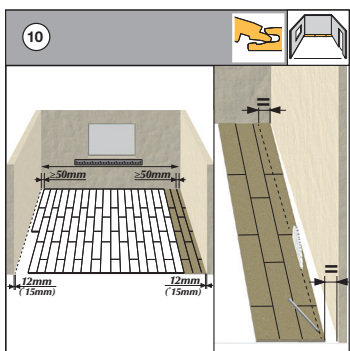
Check for defective panels

Always carefully inspect the panels for damage before installation. Check for color correctness, décor accuracy, damaged edges or locking profile, or any small damages or possible visual imperfections on the surface. Panels with minor damage can be used in situations where the panels have to be cut. The installation should be done using daylight or equivalent good lighting, as it is possible that small damages may not be recognized in poor lighting. No claims can be accepted in the case of panels which have already been used.



Panel mixing (lay alternately)

Prepare at least 4 packs of flooring. Mix panels from different packs during installation. We recommend alternate fitting of the panels from four different packs at the same time. Keep alternating the panels across the entire floor area. This guarantees the best possible appearance of your Kaindl flooring product.

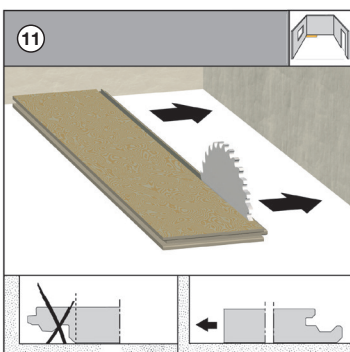


First panel row parallel towards the wall

Please insure a minimum of > 50 mm (> 2'') width in the first and last row

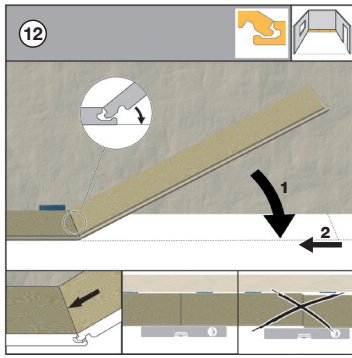
If the wall is not straight, with deviations of 5 mm, mark the course of the wall on the first row of panels using a spacer. Before marking, ensure that the row of panels is aligned perfectly straight.

Cut the panels to length along the marked lines. Furthermore, the first row of panels must be cut lengthwise if the last row of panels is less than 5 cm wide when placed against the opposite wall. Ensure that there is a gap of 12 mm (*15 mm) between the panels and the walls. Take this into account when determining the width of the last row.



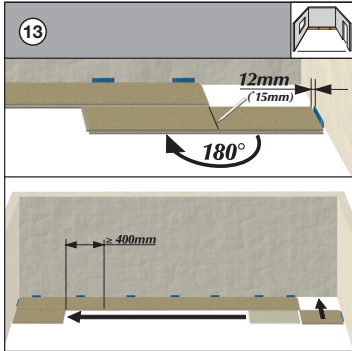
Installation start

Remove the tongue of the first panel row and lay it against the wall.



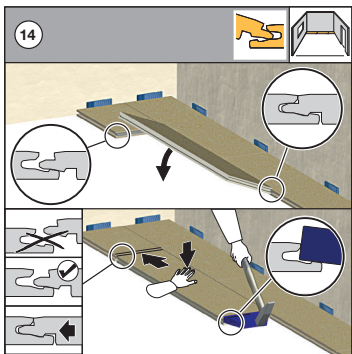
First row

Insert the panel at an angle of approx. 25° degrees and lower the panel to lock into place. Connect the panels of the first row on the short side. Insert the panel into the groove of the first panel at an angle of 25° degrees; and lower the panel to lock it into place. Ensure that the row is straight. Please see also in the installation video.



Offset installation

Mark length, of last panel in each row to allow for minimum offset to the following rows. For accurate cutting of the last panel in the row, rotate the panel 180° degrees; and with the pattern side upwards, place beside the already installed row. Allow for distance from wall at end of panel. Mark out the offset and saw it off. Always saw from the upper surface of the panel (to avoid splintering the edges). Only when using an electric jig saw or a hand-held circular saw should the patterned side be placed facing downwards. Start each row with the left-over piece from the preceding row. The short-end joints must be set in an appropriate offset (minimum 16"). Because of the offset there is stability in the laying.

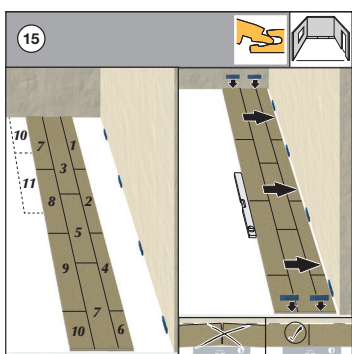


(Long side) Angle / Tap:

Place the panel lengthwise at an angle of approx. 25° and angle it in. Shift the panel now to the short side of the first panel. Push the panel down gently so that the prestressed profile locks in neatly. Pay attention to the positioning of the short sides to ensure the profile pieces are perfectly aligned. Once the plank is lying flat, place the tapping block on the profile and use a hammer to gently tap into place so that the tongue and groove have a tight connection. Please note that the tapping block should be positioned properly on the tongue so damage does not occur.

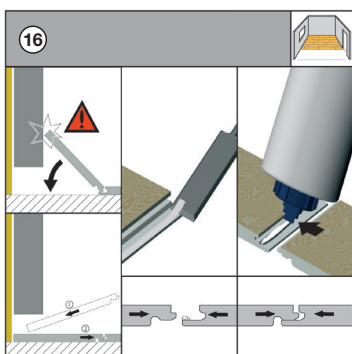
(Short side) Angle / Tap:

To start the second row, place the plank lengthwise and angle at approx. 25° before putting the plank down. Install the next plank by angling the long side at approx. 25° and dropping down, keeping in mind the short side should be 2-3mm away from the end of the previous plank. Pay attention to the positioning of the short sides to ensure the profile pieces are perfectly aligned. Once the plank is lying flat, place the tapping block on the profile and use a hammer to gently tap into place so that the tongue and groove have a tight connection. Please note that the tapping block should be positioned properly on the tongue so damage does not occur.



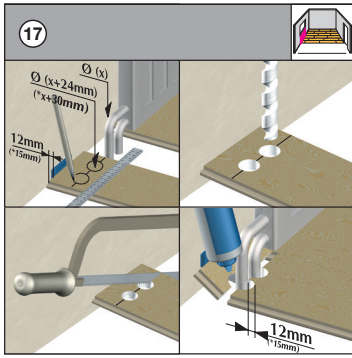
Laying in a staggered pattern:

The panels are laid according to the numbering in the image. (Trim the first row if necessary, as described in Figure 10.) In this sequence, the first 3 rows are laid out in the room. This way of laying ensures that the rows are connected in straight lines. The pre-installed rows are then pushed against the wall. The distance between the wall and the panel rows is fixed with space wedges. After that, the laying can be continued row by row.



No possibility to angle the panels

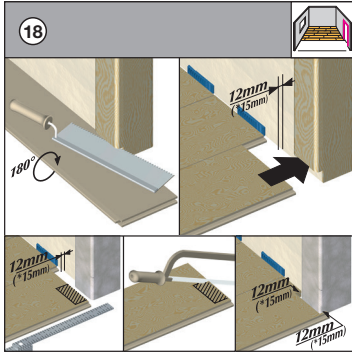
Special cases: If you are not able to angle the panels (e.g. under a door frame or low fitted radiator) you have to cut away the locking edge of lip of the bottom groove by using a wood chisel or a small block plane. Run a bead of glue on the modified tongue and groove. Tap the panels tight together by using a hammer and push block or pull-bar. If necessary, affix it with an adhesive tape.



Installation towards heating pipes (Minimum distance 12 mm or *15 mm)

Position the panel row so that a transverse joint coincides with the pipe.

Connection to radiator pipes (minimum clearance 12 mm or *15 mm)
 Glue the cut-off piece back together behind the radiator pipes so that it is watertight (using spacers).
 Drill out the marked areas. Ensure the required clearance (12 mm or *15 mm) is maintained on each side.
 First, cut the panel to the correct length. Then place the panel piece next to its intended position and measure and mark the cut-outs using a folding rule.

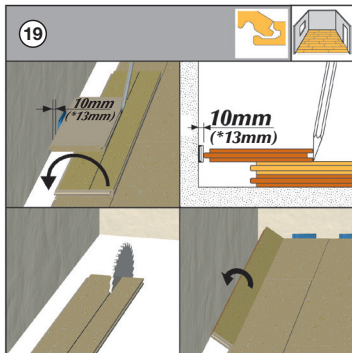


Installation towards wooden door frames

Minimum clearances: 12 mm (*15 mm)
 Place a panel (with the decorative side facing down) against the door frame. Cut into the door frame along the edge of the panel. Then slide the panel, with the decorative side facing up, under the frame. Ensure there are sufficient expansion gaps (12 mm or *15 mm) in this area as well

Installation towards metal door frames

Minimum distances 12 mm (*15 mm)
 Transfer the dimensions of the metal frame to the panel using a folding rule, ensuring the required clearance (12 mm or *15 mm) is maintained on each side. Saw out the marked area. Fit the panel, ensuring that the required clearance from the door frame is maintained.



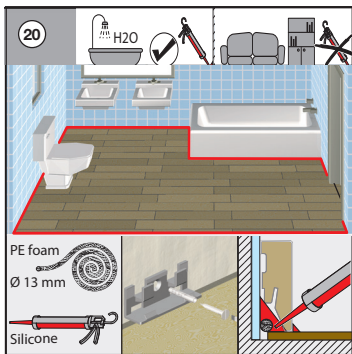
The final panel row

Place the panels exactly on the penultimate row. Use a scrap piece (original width) to mark the distance from the wall onto the panel. Cut the panels lengthways. Close the long edge. Minimum gap: 1.5 mm/m (12 mm or *15 mm)

Determine the exact width of the final row of panels.
 To do this, place a panel exactly on top of the penultimate row of panels (ensuring the correct distance from the wall). Then place a second panel, with the groove facing the wall, on top of the panel to be measured, using it as a ruler, and mark the line.

Cut the panel lengthwise. Minimum clearance: 1.5 mm/m (12 mm or *15 mm)

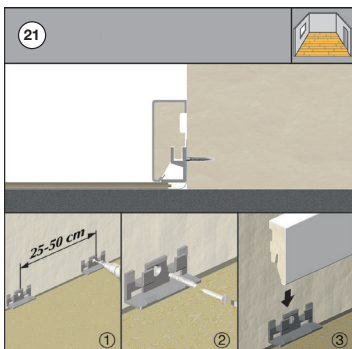
Close the long edge and fold it inwards.



Installation in an area that is susceptible to spills or liquid

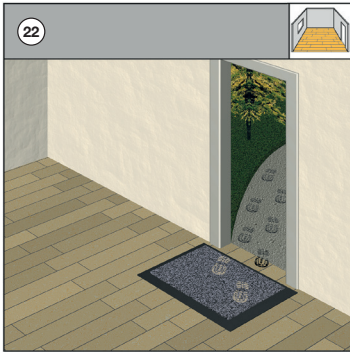
If the installation is to take place in an area that is susceptible to spills or liquid getting behind skirting (molding) boards, the perimeter of the room must be completely sealed. A 13mm (3/8") compressible polyethylene (PE) foam backer rod should be inserted to fill all expansion spaces. The backer rod should be completely covered with 100% silicone sealant around the entire perimeter of the installation.

An acrylic sealant should not be used. A small silicone bead should be applied where the skirting (molding) meets the floor, creating a perimeter barrier to prevent any spills or liquids from getting underneath or behind the skirting. The same result can be achieved with waterproof skirting. Any fixed objects, door frames, etc. should be sealed in the same way using a 100% silicone sealant.



Skirting Board

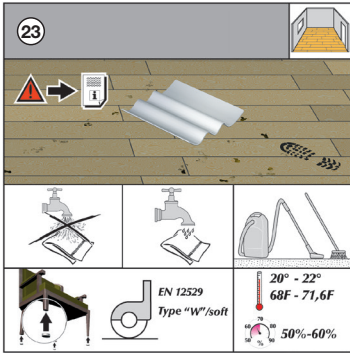
The fixing clips should be attached to the wall at intervals of 25–50 cm. The skirting boards can then be clipped onto them. If necessary, use splash-proof skirting boards.



Prevent dirt ingress

Please place entrance dirt traps or door mats in areas exposed to mud e.g. Cleaning zones must be installed in commercial use areas. Minimum length 4m.

Dirt absorbing mats ensure that only an average amount of dirt comes on the floor. Dirt ingress e.g. fine minerals (little stones) damage your floor because they work like sand paper.



Care

No wet cleaning. Use felt protectors for furniture feet. Maintain optimum room climate.

The Kaindl laminate floor is very hygienic and easy to care for. Please, however, give the following rules your attention: For daily care, sweeping or vacuuming is sufficient. Footprints and dirt can easily be removed with damp cloth. Please use a well-wrung out; damp cloth. Under no circumstances should the floor be cleaned with a wet cloth or mop or be soaked with liquid.

Hardened glue-residue can be removed with acetone or a special glue solvent or usual household cleaners may be used, please avoid scouring agents, wax or polish. For regular cleaning and preservation we recommend Kaindl-Floor Cleaner. Larger soiling and persistent stains like color, glue, nail varnish or oil can easily be removed using acetone or any other alcohol containing solvents.

Maintenance

Put flower pots on water resistant mats. Furniture legs should be fitted with felt gliding pads. Rolling furniture should have soft rubber rollers (type W) in accordance with DIN 12529.

Expansion Space Required				
Euro		U.S.		
Linear Feet without transition	In Meters	In mm	Close to Feet	Closest to:
	Up to 8	12mm	Up to 26	3/8
	8	12mm	26	1/4
	9-10	13mm	27-30	7/16
	11-12	14mm	31-33	1/2
	13-14	15mm	34-37	9/16
	15	22mm	38-41	7/8