



KAINDL

SOLID



BOARDS

FLOORS

FLOORING collection **SOLID**

IDEAS

DE | EN



Quality Floors. Made in Salzburg.



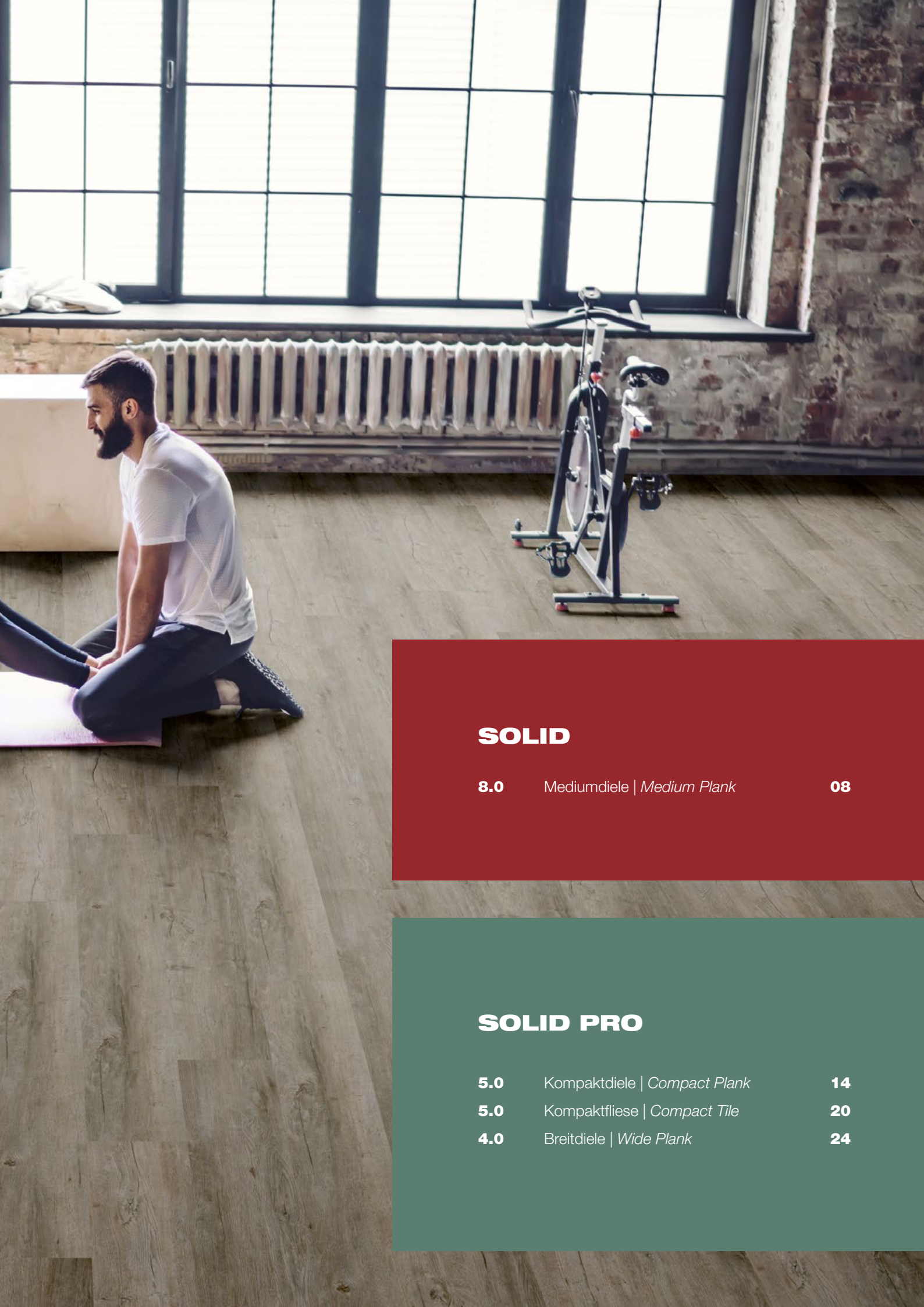


Vorteile

- Einfache, komfortable und schnelle Verlegung
- Sichere Verriegelung dank bewährtem Kaindl Fold Down System
- Geeignet für die Verlegung auf Fußbodenheizung
- Strapazierfähig – ideal für hohe Beanspruchung
- Langlebig – bis zu 30 Jahre Kaindl Garantie
- Lichtecht – kein Ausbleichen des Designs
- Wohngesund – antibakteriell, hygienisch und höchste Raumluftgüte

Advantages

- *Convenient, quick and easy installation*
- *Secure locking thanks to the proven Kaindl Fold Down System*
- *Suitable for installation on underfloor heating*
- *Hard-wearing – ideal for high traffic areas*
- *Long-lasting – up to 30-year Kaindl warranty*
- *Lightfast – no bleaching of the design*
- *Healthy living – anti-bacterial, hygienic, excellent air quality*



SOLID

8.0 Mediumdiele | *Medium Plank*

08

SOLID PRO

5.0 Kompaktdiele | *Compact Plank*

14

5.0 Kompaktfliese | *Compact Tile*

20

4.0 Breitdiele | *Wide Plank*

24



**Quellungsarme HDF
Holzfaserplatte**

*Low swelling HDF
fibre board*



**Mineralische Vinyl
Trägerplatte mit
Schalldämmung**

*Stone Powder
Compound board
with acoustic layer*



**Mineralische Vinyl
Trägerplatte**

*SPC Stone Powder
Compound board*



SOLID

- Formstabile, hochverdichtete Holzfaserplatte
 - Elastische, hochwertige Vinylschicht
 - Wasserresistente Oberfläche
 - Weich und fußwarm
 - Leise und schalldämmend
 - Antistatisch
 - Ideal für den gesamten Wohnbereich
- *Inherently stable, highly compacted fibreboard*
 - *Highly compacted elastic vinyl coat*
 - *Water-resistant surface*
 - *Soft and warm underfoot*
 - *Quiet and noise-absorbing*
 - *Anti-static*
 - *Ideal for the entire living area*

SOLID PRO

- Wasserfest
 - Formstabil
 - Exzellenter Gehkomfort, angenehme Oberfläche
 - Im Dielen- und Fliesenformat erhältlich
 - Keine Dehnungsfugen bei Verlegung auf einer Fläche von max. 400m²*
 - Rutschhemmend
 - Widerstandsfähig und abriebfest
 - Unempfindlich gegen Flecken, Kratzer und Druckstellen
 - Geringe Aufbauhöhe, bestens geeignet für Renovierungen
 - Ideal für Wintergärten und Feuchträume
- *Waterproof*
 - *Inherently stable*
 - *Very comfortable underfoot, pleasant surface*
 - *Available in board and tile formats*
 - *No expansion gaps when installed on an area of up to 400m²**
 - *Non-slip*
 - *Resilient and abrasion-proof*
 - *Insensitive to stains, scratches and pressure points*
 - *Low structural height, perfect for renovation projects*
 - *Ideal for conservatories and wet-rooms*

* Unter Berücksichtigung der Verlegeanleitung.

* *In consideration of the installation instruction.*

VINYL **SOLID**

Dielenformat | *Plank Format*



Mediumdielen | *Medium Plank*: 1383 x 223 mm

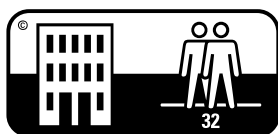
Dekorbild | *Design*



1-Stab | *1-Strip*



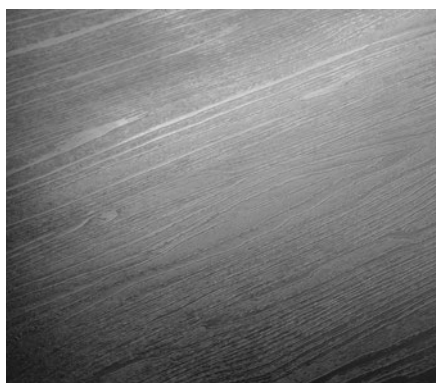
Garantie | *Guarantee*



Nutzungsstufe | *Utility Class*



Quellungsarme HDF Holzfaserverplatte
Low swelling HDF fibre board



BW Brushed Wood



S091 BW Kiefer | *Pine* **LEVADO**

8.0 Mediumdiele | **8.0** Medium Plank



SOLID



S083 BW Kiefer | Pine **AROSA**

67278



S084 BW Eiche | Oak **DAVOS**

67213



S091 BW Kiefer | Pine **LEVADO**

67395

8.0 Mediumdiele | **8.0** Medium Plank



SOLID



S080 BW Schiefer | Slate **FLINT**

8.0 Mediumdiele | **8.0** *Medium Plank*



VINYL **SOLID PRO**

Dielenformat | *Plank Format*



Kompaktdiele | *Compact Plank*: 1210 x 192 mm

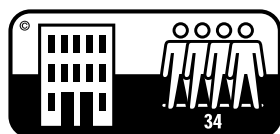
Dekorbild | *Design*



1-Stab | *1-Strip*



Garantie | *Guarantee*



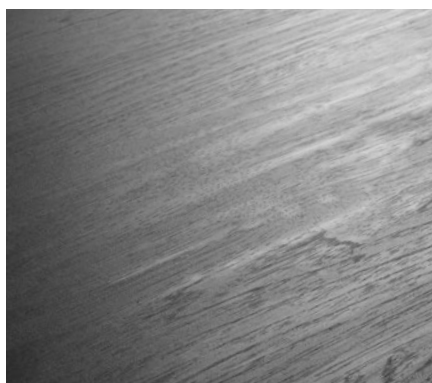
Nutzungsklasse | *Utility Class*



Mineralische Vinyl Trägerplatte mit Schalldämmung
Stone Powder Compound board with acoustic layer



VS Natural Oak



AT Authentic Touch



S305 AT Eiche | Oak **ANCONA**

5.0 Kompaktdiele | **5.0** *Compact Plank*

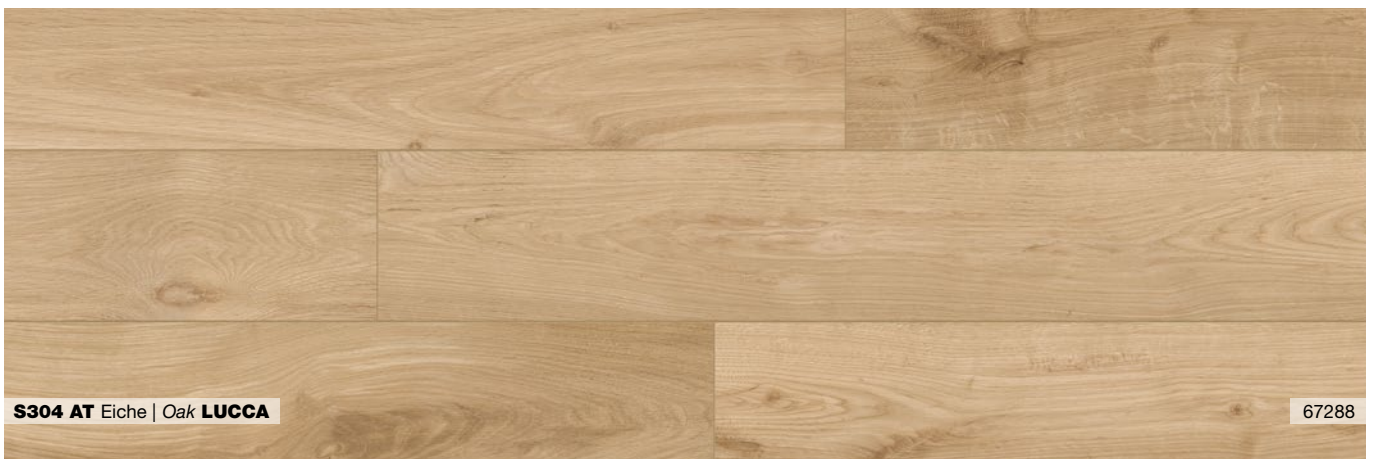


SOLID PRO



S303 VS Eiche | Oak PADUA

5.0 Kompaktdiele | 5.0 Compact Plank



SOLID PRO



5.0 Kompaktdiele | **5.0** *Compact Plank*



VINYL SOLID PRO

Dielenformat | *Plank Format*



Kompaktfiese | *Compact Tile*: 600 x 295 mm

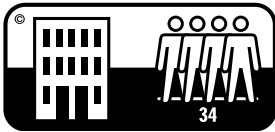
Dekorbild | *Design*



Fliese | *Tile*



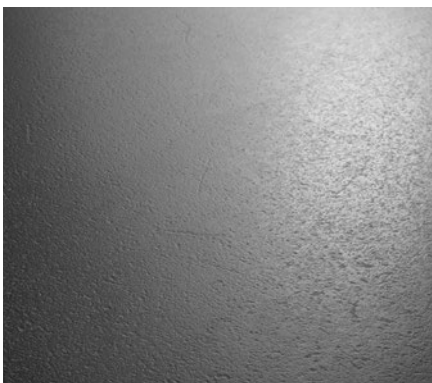
Garantie | *Guarantee*



Nutzungsklasse | *Utility Class*



Mineralische Vinyl Trägerplatte mit Schalldämmung
Stone Powder Compound board with acoustic layer



BS Brushed Stone



S313 BS Marmor | *Marble MILANO*

5.0 Kompakfliese | **5.0** Compact Tile



SOLID PRO



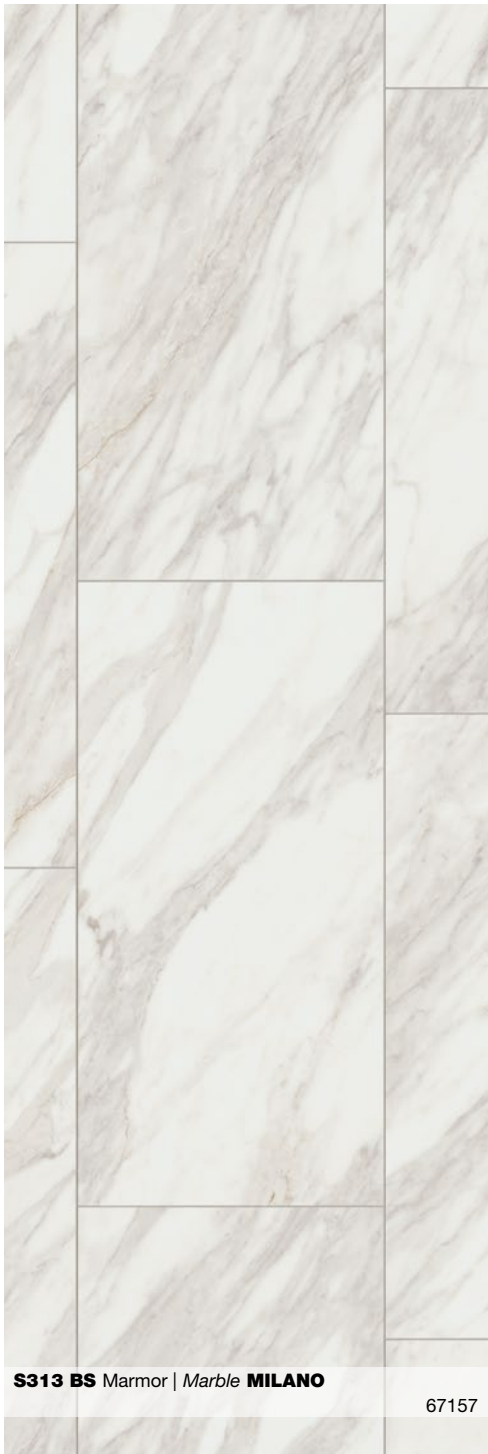
S310 BS Beton | Concrete **FANO**

5.0 Kompaktfliese | **5.0** Compact Tile



S310 BS Beton | Concrete **FANO**

67426



S313 BS Marmor | Marble **MILANO**

67157

VINYL SOLID PRO

Dielenformat | *Plank Format*



Breitdiele | *Wide Plank*: 1280 x 295 mm

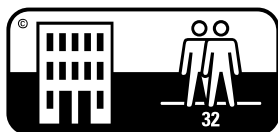
Dekorbild | *Design*



1-Stab | *1-Strip*



Garantie | *Guarantee*



Nutzungsstufe | *Utility Class*



Mineralische Vinyl Trägerplatte
Stone Powder Compound board



AS Solid



S321 AS Eiche | Oak **ARONA**



SOLID PRO



S330 AS Eiche | Oak **ARAGON**

67420

4.0 Breitdielen | **4.0** Wide Plank



SOLID PRO



S324 AS Eiche | Oak **MATARO**

67218



S325 AS Eiche | Oak **LORCA**

67362



S328 AS Eiche | Oak **HUELVA**

67247

4.0 Breitdiele | **4.0** Wide Plank



FAKTEN | FACTS

SOLID

8.0 Mediumdiele | 8.0 Medium Plank

| Dekor-Nr. Decor-No. | | Dekorbezeichnung Decor name | Oberfläche Surface | Dekorbild Design | Verlegung Installation | Sockelleiste Skirting Board | Seite Page |
|------------------------|------------------|--------------------------------|-----------------------|---------------------|---------------------------|--------------------------------|--------------|
| S080 | Schiefer Slate | FLINT | BW | 1-Stab 1-Strip | Fold Down | 67448 | 12, 13 |
| S083 | Kiefer Pine | AROSA | BW | 1-Stab 1-Strip | Fold Down | 67278 | 10 |
| S084 | Eiche Oak | DAVOS | BW | 1-Stab 1-Strip | Fold Down | 67213 | 10 |
| S085 | Eiche Oak | GERONA | BW | 1-Stab 1-Strip | Fold Down | 67452 | 11 |
| S087 | Eiche Oak | BAYAMO | BW | 1-Stab 1-Strip | Fold Down | 67362 | 11 |
| S088 | Eiche Oak | HAVANNA | BW | 1-Stab 1-Strip | Fold Down | 67235 | 13 |
| S090 | Eiche Oak | BACOA | BW | 1-Stab 1-Strip | Fold Down | 67273 | 13 |
| S091 | Kiefer Pine | LEVADO | BW | 1-Stab 1-Strip | Fold Down | 67395 | 9, 10 |
| S093 | Eiche Oak | MEVIA | BW | 1-Stab 1-Strip | Fold Down | 67275 | 11 |

SOLID PRO

5.0 Kompaktdiele | 5.0 Compact Plank

| | | | | | | | |
|------|-------------|---------|----|------------------|-----------|-------|--------|
| S303 | Eiche Oak | PADUA | VS | 1-Stab 1-Strip | Fold Down | 67222 | 16, 17 |
| S304 | Eiche Oak | LUCCA | AT | 1-Stab 1-Strip | Fold Down | 67288 | 17 |
| S305 | Eiche Oak | ANCONA | AT | 1-Stab 1-Strip | Fold Down | 67263 | 15, 17 |
| S307 | Eiche Oak | TERNI | VS | 1-Stab 1-Strip | Fold Down | 67398 | 18 |
| S309 | Eiche Oak | MARSALA | VS | 1-Stab 1-Strip | Fold Down | 67067 | 18, 19 |

SOLID PRO

5.0 Kompaktfliese | 5.0 Compact Tile


| | | | | | | | |
|------|------------------|--------|----|---------------|-----------|-------|--------|
| S310 | Beton Concrete | FANO | BS | Fliese Tile | Fold Down | 67426 | 22, 23 |
| S313 | Marmor Marble | MILANO | BS | Fliese Tile | Fold Down | 67157 | 21, 23 |

SOLID PRO


4.0 Breitdiele | 4.0 Wide Plank


MASTER FLOOR
by KAINDL

| | | | | | | | |
|------|-------------|--------|----|------------------|-----------|-------|--------|
| S321 | Eiche Oak | ARONA | AS | 1-Stab 1-Strip | Fold Down | 67213 | 25, 27 |
| S323 | Eiche Oak | SIERO | AS | 1-Stab 1-Strip | Fold Down | 67276 | 27 |
| S324 | Eiche Oak | MATARO | AS | 1-Stab 1-Strip | Fold Down | 67218 | 28 |
| S325 | Eiche Oak | LORCA | AS | 1-Stab 1-Strip | Fold Down | 67362 | 28 |
| S326 | Eiche Oak | OVIEDO | AS | 1-Stab 1-Strip | Fold Down | 67199 | 29 |
| S328 | Eiche Oak | HUELVA | AS | 1-Stab 1-Strip | Fold Down | 67247 | 28 |
| S329 | Eiche Oak | GANDIA | AS | 1-Stab 1-Strip | Fold Down | 67457 | 27 |
| S330 | Eiche Oak | ARAGON | AS | 1-Stab 1-Strip | Fold Down | 67420 | 26 |

| Nutzungsklasse Utility Class | Garantie* Guarantee* | Verpackung Packaging |
|--|---|--|
|  | <p>30 YEARS KAINDL GUARANTEE</p> | <p>Paket: 7 Stk./2,16 m²/17,1 kg Palette: 36 Pak./77,72 m²/639,3 kg Pack: 7 pcs./23.24 sq ft /37.7 lbs Pallet: 36 pac./836.57 sq ft /1409.5 lbs</p> |

| | | |
|--|---|--|
|  | <p>30 YEARS KAINDL GUARANTEE</p> | <p>Paket: 8 Stk./1,86 m²/17,4 kg Palette: 40 Pak./74,34 m²/731,4 kg Pack: 8 pcs./20.01 sq ft /38.4 lbs Pallet: 40 pac./800.22 sq ft /1612.4 lbs</p> |
|--|---|--|

| | | |
|--|---|--|
|  | <p>30 YEARS KAINDL GUARANTEE</p> | <p>Paket: 11 Stk./1,95 m²/18,2 kg Palette: 36 Pak./70,09 m²/691,3 kg Pack: 11 pcs./20.96 sq ft /40.2 lbs Pallet: 36 pac./754.47 sq ft /1524.0 lbs</p> |
|--|---|--|

| | | |
|--|---|--|
|  | <p>15 YEARS KAINDL GUARANTEE</p> | <p>Paket: 8 Stk./3,02 m²/24,0 kg Palette: 30 Pak./90,62 m²/240 Stk./755 kg Pack: 8 pcs./32.51 sq ft /52.9 lbs Pallet: 30 pac./975.43 sq ft /240 pcs./1664.5 lbs</p> |
|--|---|--|

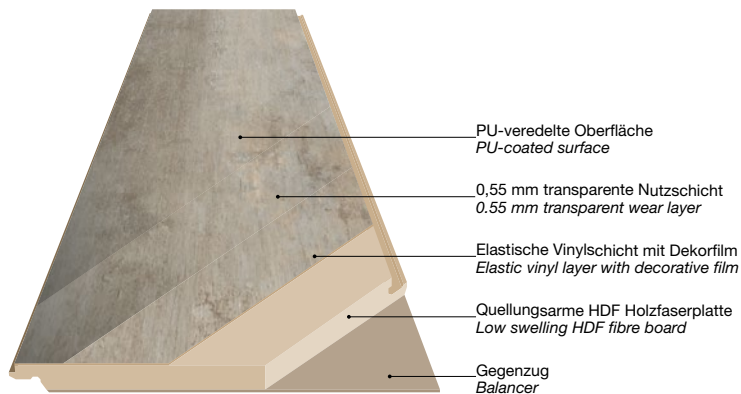
* Gemäß Kaindl Garantiebedingungen | In accordance with Kaindl's warranty conditions: www.kaindl.com

Technische Änderungen sowie Farbabweichungen, Druckfehler und Irrtümer sind vorbehalten.
 Technical modifications as well as deviation in colour, misprint and errors are reserved.

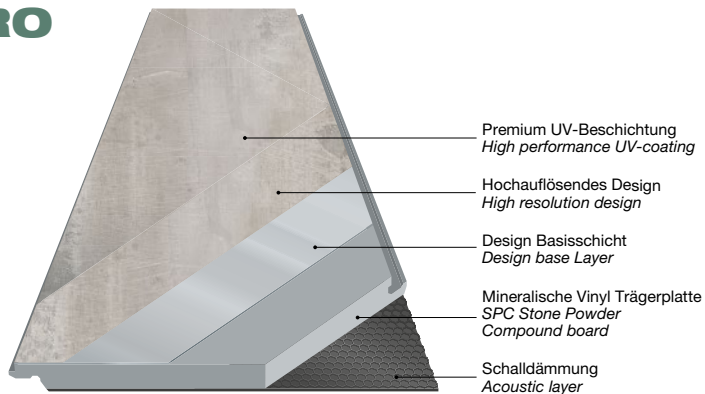
FAKTEN | FACTS

Aufbau | Product Construction

SOLID
HDF

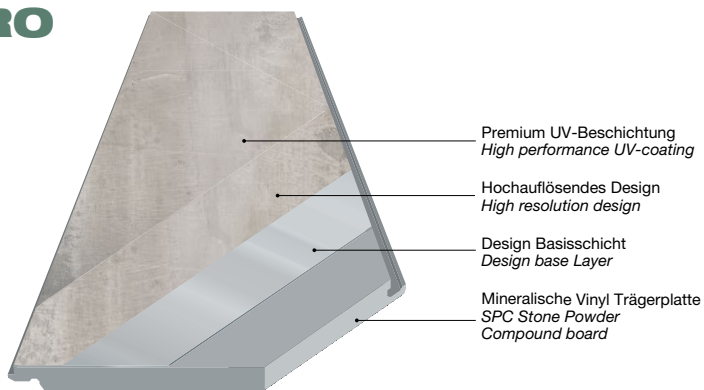


SOLID PRO
SPC



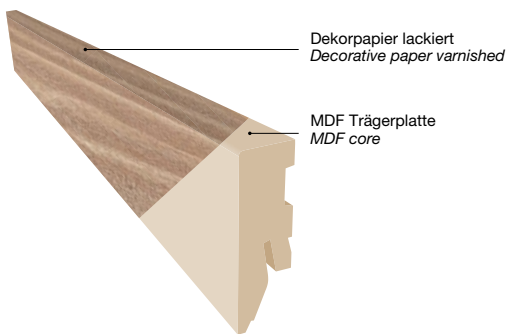
SOLID PRO
SPC

MASTER FLOOR
by KAINDL

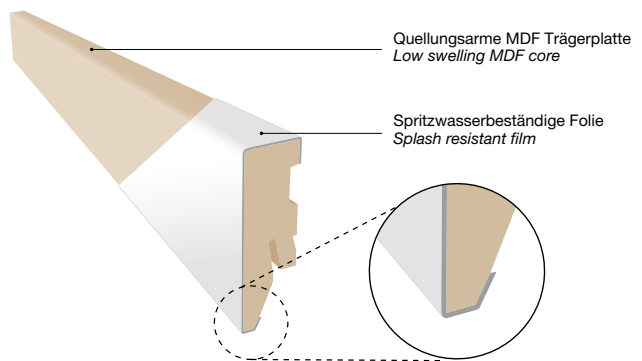


Sockelleisten | Skirting Boards

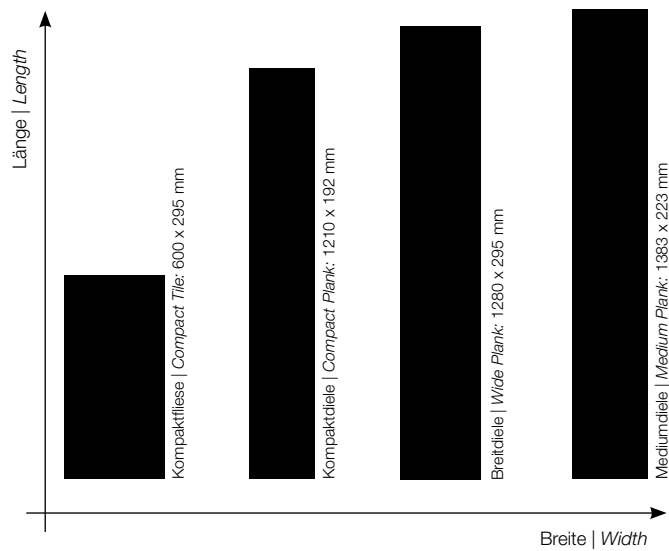
Passend zum Fußbodendesign
Matching to floor design



Spritzwasserbeständig, weiß + schwarz
Splash resistant, white + black



Dielenformate | Plank Formats



* außer | except
Solid Pro



* außer | except
Solid










* außer | except Solid: A

*Information sur le niveau d'émission de substances volatiles dans l'air intérieur, présentant un risque de toxicité par inhalation, sur une échelle de classe allant de A+ (très faibles émissions) à C (fortes émissions).



Technische Details auf
Technical datasheet on
www.kaindl.com

ZUBEHÖR | ACCESSORIES

| Abbildung Illustration | Materialnummer Material No. | Beschreibung Description | Verpackungseinheit Packaging Unit |
|---|--------------------------------|--|---|
|  | SL5018 | Sockelleiste 2600 x 50 x 18 mm <i>Skirting Board 2600 x 50 x 18 mm</i> | 10 Stk. pro Dekor pro Karton = 26 Lfm., 640 Stk. pro Palette 10 pcs. per decor per box = 26 lm., 640 pcs. per pallet |
| | SL501867157 | Sockelleiste, spritzwasser beständig, weiß 2600 x 50 x 18 <i>Skirting Board, splash resistant, white 2600 x 50 x 18 mm</i> | |
|  | SL501867455 | Sockelleiste, spritzwasserbeständig, schwarz, 2600 x 50 x 18 mm <i>Skirting Board, splash resistant, black, 2600 x 50 x 18 mm</i> | |
| | SL501867157 | Sockelleiste, spritzwasserbeständig, weiß, 2600 x 50 x 18 mm <i>Skirting Board, splash resistant, white, 2600 x 50 x 18 mm</i> | |
|  | FZLECL | Clips für Sockelleisten <i>Mounting clips for Skirting Boards</i> | 30 Stk. pro Karton, 50 Kartons pro Überkarton, 36 Überkartons pro Palette 30 pcs. per box, 50 boxes per outer box, 36 outer boxes per pallet |
|  | FZABHAN | Abstandhalter <i>Spacer</i> | 20 Stk. pro Beutel, 30 Beutel pro Karton 20 pcs. per bag, 30 bags per box |
|  | FZSOUN10 | Sound System Underlay 1.0 mm | 1 Stk. pro Karton = 10 m ² 1 pc. per box = 10 m ² |
|  | FZALBA | Alu-Klebeband, 50 m x 50 mm <i>Aluminium tape, 50 m x 50 mm</i> | 50 Lfm. pro Rolle, 36 Rollen pro Paket 50 lm. per roll, 36 rolls per pack |
|  | FZWIPF | Wischpflege, 1 Liter <i>Cleaner, 1 liter</i> | 15 Stk. pro Karton, 28 Kartons pro Palette 15 pcs. per box, 28 boxes per pallet |

| Abbildung <i>Illustration</i> | Materialnummer <i>Material No.</i> | Beschreibung <i>Description</i> | Verpackungseinheit <i>Packaging Unit</i> |
|---|---------------------------------------|--|---|
|  | FZ5IEED | Inneneck, Edelstahloptik <i>Inner corner, brushed steel optic</i> | 2 Stk. pro Beutel, 10 Beutel pro Karton <i>2 pcs. per bag, 10 bags per box</i> |
|  | FZ5IEWE | Inneneck, weiß <i>Inner corner, white</i> | |
|  | FZ5AESW | Außeneck, schwarz <i>Outer corner, black</i> | |
|  | FZ5AEED | Außeneck, Edelstahloptik <i>Outer corner, brushed steel optic</i> | 2 Stk. pro Beutel, 10 Beutel pro Karton <i>2 pcs. per bag, 10 bags per box</i> |
|  | FZ5AEWE | Außeneck, weiß <i>Outer corner, white</i> | |
|  | FZ5IESW | Inneneck, schwarz <i>Inner corner, black</i> | |
|  | FZ5ESED | Endstück, Edelstahloptik <i>End piece, brushed steel optic</i> | 2 Stk. pro Beutel, 10 Beutel pro Karton <i>2 pcs. per bag, 10 bags per box</i> |
|  | FZ5ESWE | Endstück, weiß <i>End piece, white</i> | |
|  | FZ5ESSW | Endstück, schwarz <i>End piece, black</i> | |

ZUBEHÖR | ACCESSORIES

SOLID



HDF

| | | | |
|--|-------------|---|--|
|  | FZPRB27EDEL | Bewegungsprofil 2700 mm, Edelstahloptik <i>Transition profile 2700 mm, brushed steel optic</i> | 10 Stk. pro Karton <i>10 pcs. per box</i> |
|  | FZPRE27EDEL | Endprofil 2700 mm, Edelstahloptik <i>End profile 2700 mm, brushed steel optic</i> | 10 Stk. pro Karton <i>10 pcs. per box</i> |
|  | FZPRA27EDEL | Ausgleichsprofil 2700 mm, Edelstahloptik <i>Reducer profile 2700 mm, brushed steel optic</i> | 10 Stk. pro Karton <i>10 pcs. per box</i> |
|  | FZPRT27EDEL | Treppenprofil 2700 mm, Edelstahloptik <i>Stair profile 2700 mm, brushed steel optic</i> | 10 Stk. pro Karton <i>10 pcs. per box</i> |

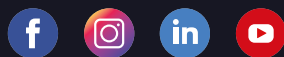
SOLID PRO

SPC

SPC

| | | | |
|---|------------|---|--|
|  | FZPRB9PRO | Bewegungsprofil 900 mm, Edelstahloptik <i>Transition profile 900 mm, brushed steel optic</i> | 10 Stk. pro Karton <i>10 pcs. per box</i> |
| | FZPRB27PRO | Bewegungsprofil 2700 mm, Edelstahloptik <i>Transition profile 2700 mm, brushed steel optic</i> | 5 Stk. pro Karton <i>5 pcs. per box</i> |
|  | FZPRE9PRO | Endprofil 900 mm, Edelstahloptik <i>End profile 900 mm, brushed steel optic</i> | 10 Stk. pro Karton <i>10 pcs. per box</i> |
| | FZPRE27PRO | Endprofil 2700 mm, Edelstahloptik <i>End profile 2700 mm, brushed steel optic</i> | 5 Stk. pro Karton <i>5 pcs. per box</i> |
|  | FZPRA9PRO | Ausgleichsprofil 900 mm, Edelstahloptik <i>Reducer profile 900 mm, brushed steel optic</i> | 10 Stk. pro Karton <i>10 pcs. per box</i> |
| | FZPRA27PRO | Ausgleichsprofil 2700 mm, Edelstahloptik <i>Reducer profile 2700 mm, brushed steel optic</i> | 5 Stk. pro Karton <i>5 pcs. per box</i> |

Follow us on



Impressum *Imprint* | Herausgeber *Publisher*
kaindl.com/impressum